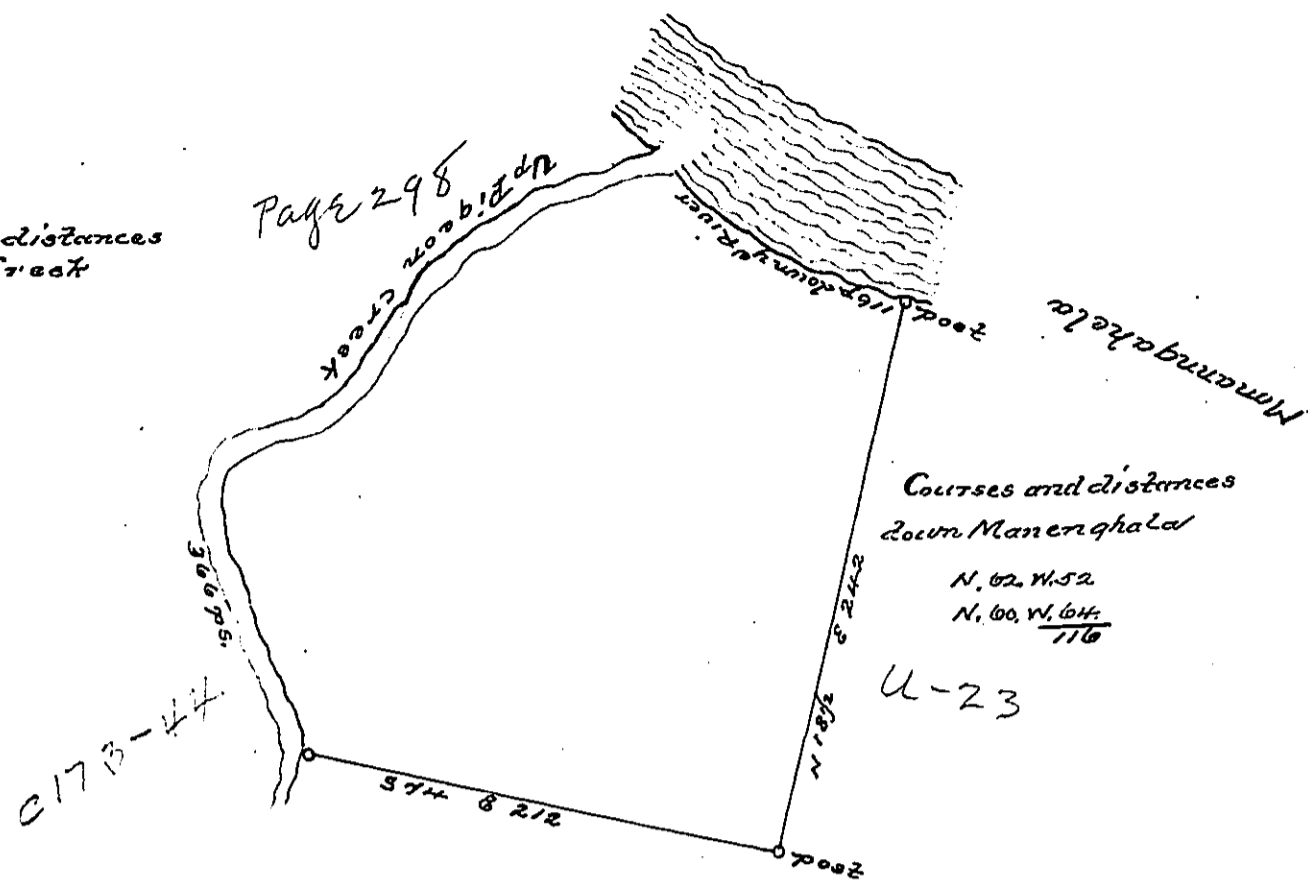


Courses and distances  
up Pigeon Creek

S. 81. N. 60
S. 59. N. 42
S. 46. N. 90
S. 73. N. 50
S. 13. 6 124
366

Page 298



Courses and distances  
Down Monungahala

N. 62. W. 52
N. 60. W. 64
116

U-23

in Fallowfield Tow<sup>r</sup>

The above is a draught of a Survey made Novem<sup>r</sup> 10<sup>th</sup> 1784 situated on the west side of the Monungahala, In pursuance of an order of survey granted to James Linnes N<sup>o</sup> 3064, dated April 17<sup>th</sup> 1769. Containing Three Hundred and 41 acres & 2 ps. with 6 ps<sup>t</sup> Cent allowance for Roads &c. And is called Paradise - Returned for Ephraim Blair Esqr. David Redick A.S.

To John Lukens Esqr.  
S.S.

IN TESTIMONY that the above is a copy of the original remaining on file in the Department of Internal Affairs of Pennsylvania, made conformably to an Act of Assembly approved the 16th day of February, 1833, I have hereunto set my Hand and caused the Seal of said Department to be affixed at Harrisburg, this

third day of September 1895

*James W. Latta*  
Secretary of Internal Affairs.